



COLORADO

Department of Transportation

2017 Pedestrian Count Summary



Non-Motorized Monitoring
2017 Counter Summary
5/30/2018

Count Site Information

Operating Agency: CDOT
Location: C470 Trail south of Ken Caryl Ave
Count Mode: Bike/Ped Combined
Count Site ID: C90026
Lat/Long: 39.578412 / -105.140599
Facility Type: Multi-Use Path
IN Direction: NB
OUT Direction: SB

Travel Volume Statistics

Total Volume: 62,054
AADT: 174
Weekday/Weekend Index (WD/WE): 0.43
AM-PM/Mid-Day Index (AMPM/Mid-Day): 0.60
Directional Split (IN / OUT): 49% 51%
Peak Day: 689

DOW Averages:

Annual Average Day of the Week (AADW)			
Day of Week	Total	IN	OUT
Sunday	289	142	148
Monday	119	58	61
Tuesday	123	61	62
Wednesday	135	69	67
Thursday	124	63	61
Friday	135	68	67
Saturday	296	144	153

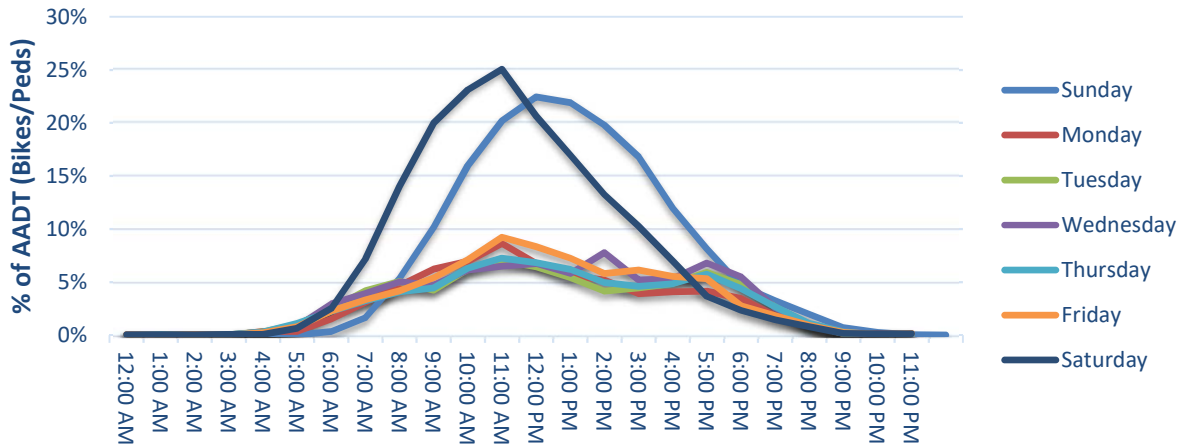
Data Quality

Days of Data: 355
Percent Complete (Year): 97%

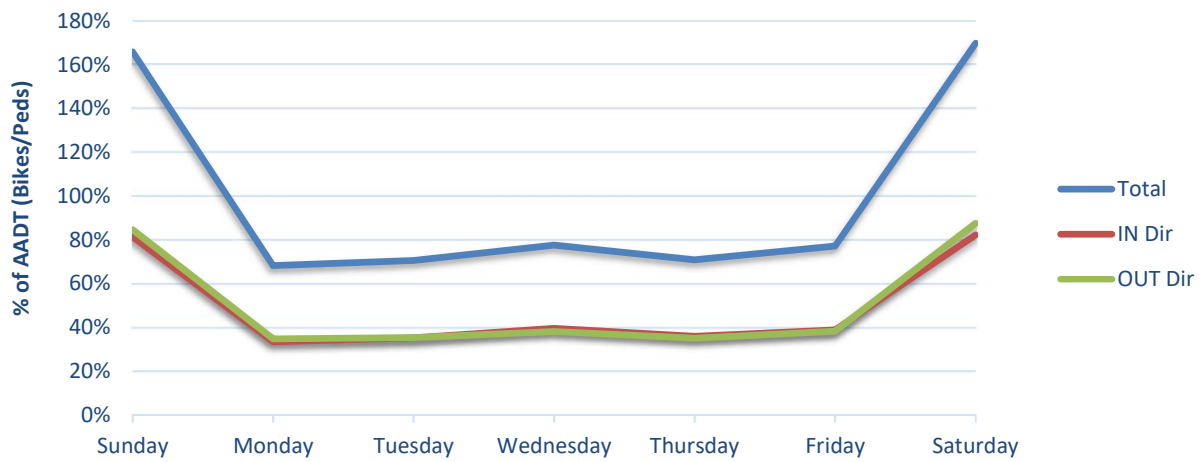
Common Errors / Notes:

Traffic Patterns

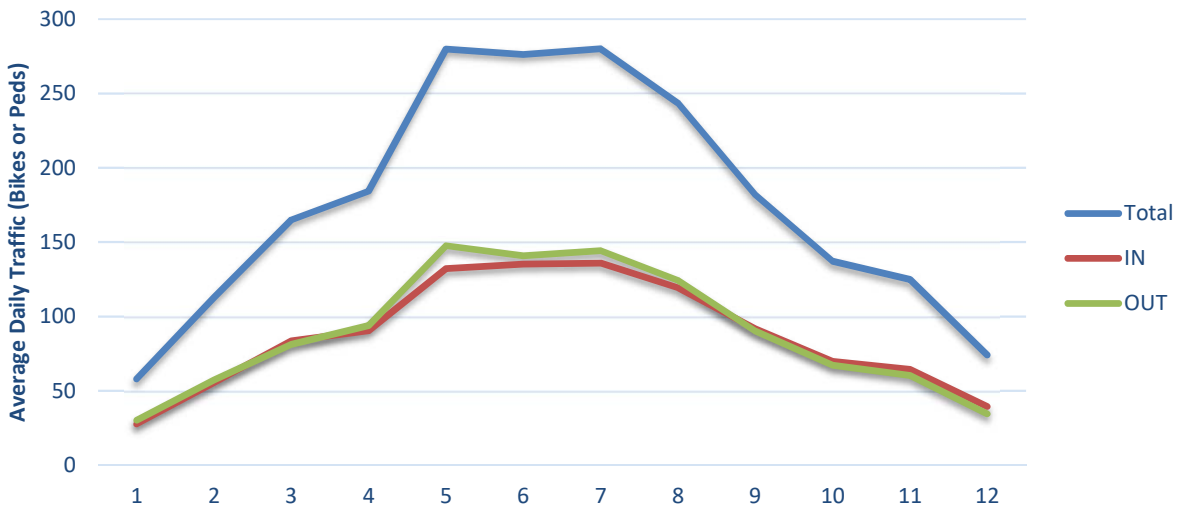
Hour of Day



Day of Week



Month of Year





Non-Motorized Monitoring
2017 Counter Summary
5/30/2018

Count Site Information

Operating Agency: CDOT
Location: Poudre Rive Trl
Count Mode: Pedestrian
Count Site ID: P60002
Lat/Long: 40.59681, -105.08242
Facility Type: Shared-use Path
IN Direction: NB
OUT Direction: SB

Travel Volume Statistics

Total Volume: 77,647
AADT: 424
Weekday/Weekend Index (WD/WE): 0.83
AM-PM/Mid-Day Index (AMPM/Mid-Day): 0.58
Directional Split (IN / OUT): 57% 43%
Peak Day: 1013

DOW Averages:

Annual Average Day of the Week (AADW)			
Day of Week	Total	IN	OUT
Sunday	501	276	225
Monday	371	206	166
Tuesday	422	243	179
Wednesday	381	214	166
Thursday	401	233	168
Friday	425	256	168
Saturday	468	257	210

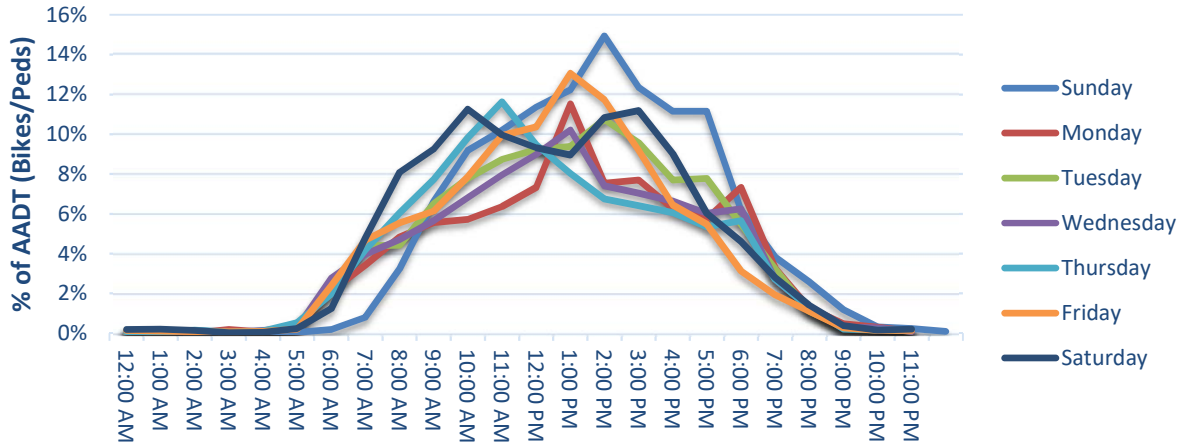
Data Quality

Days of Data: 183
Percent Complete (Year): 50%

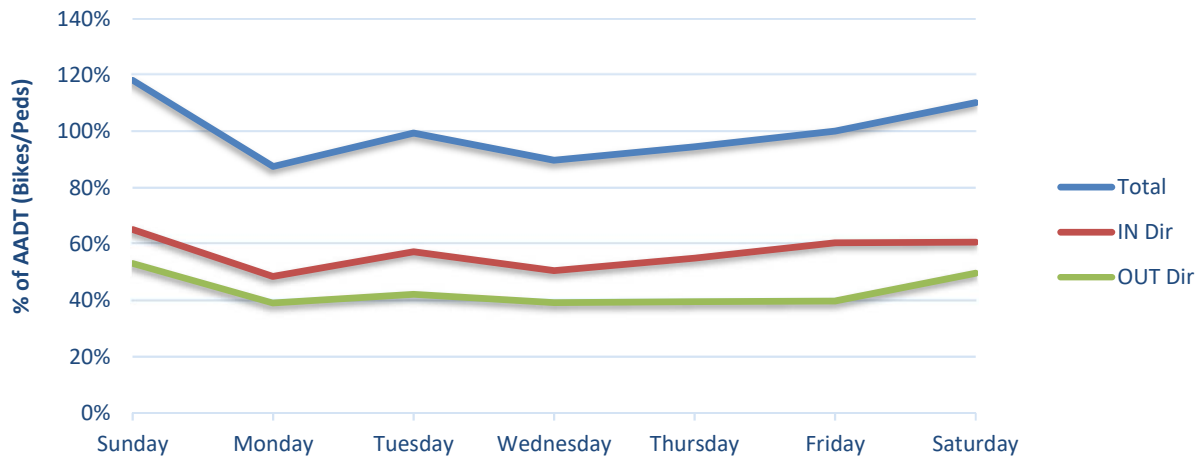
Common Errors / Notes: Erratic pedestrian split Oct to Dec

Traffic Patterns

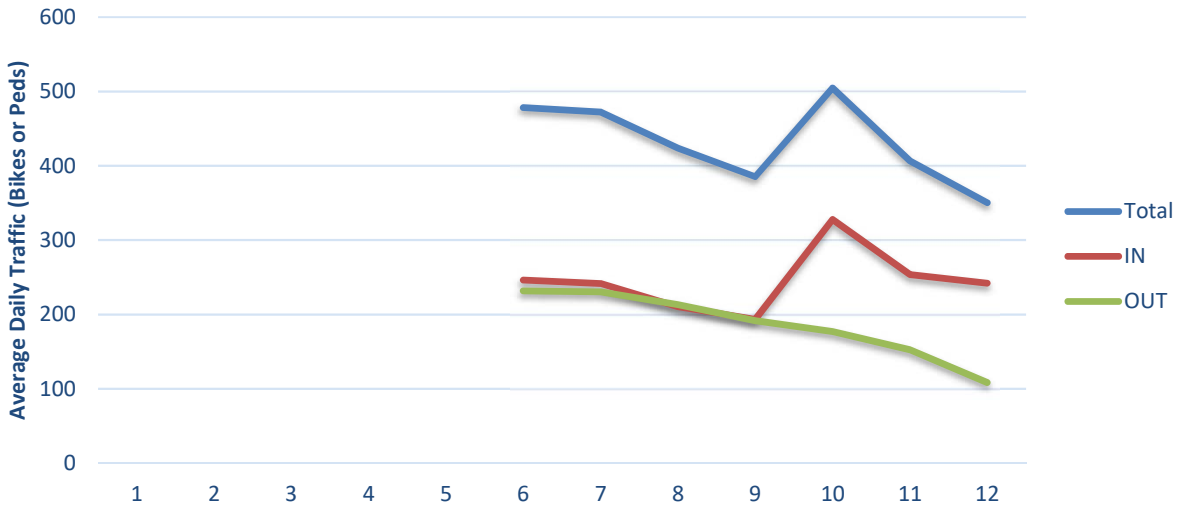
Hour of Day



Day of Week



Month of Year





Non-Motorized Monitoring
2017 Counter Summary
5/30/2018

Count Site Information

Operating Agency: CDOT
Location: Highline Canal Trail
Count Mode: Pedestrian
Count Site ID: P90009
Lat/Long: 39.67427 / -104.88004
Facility Type: Multi-Use Trail
IN Direction: NB
OUT Direction: SB

Travel Volume Statistics

Total Volume: 41,419
AADT: 139
Weekday/Weekend Index (WD/WE): 0.77
AM-PM/Mid-Day Index (AMPM/Mid-Day): 1.17
Directional Split (IN / OUT): 55% 45%
Peak Day: 392

DOW Averages:

Annual Average Day of the Week (AADW)			
Day of Week	Total	IN	OUT
Sunday	171	91	80
Monday	129	73	56
Tuesday	131	75	56
Wednesday	141	81	60
Thursday	119	64	55
Friday	120	66	54
Saturday	163	89	73

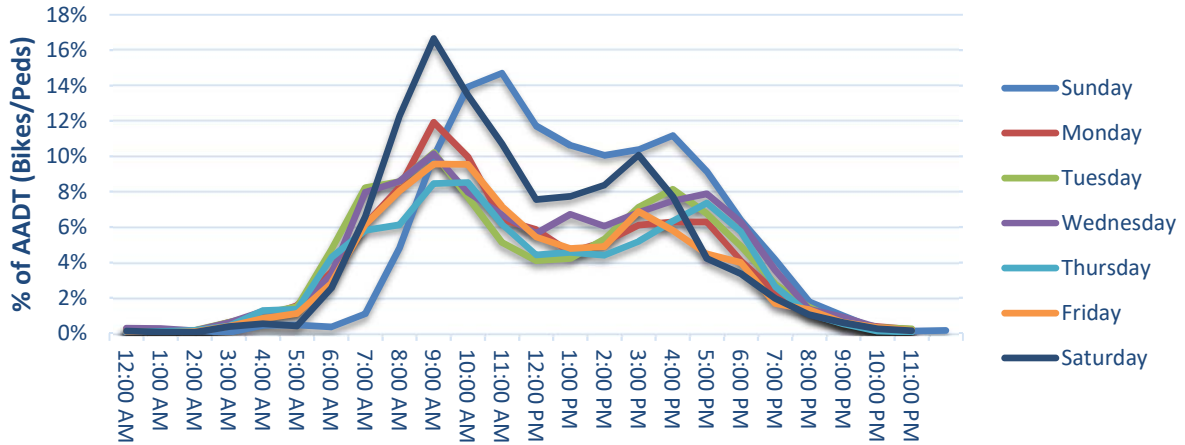
Data Quality

Days of Data: 266
Percent Complete (Year): 73%

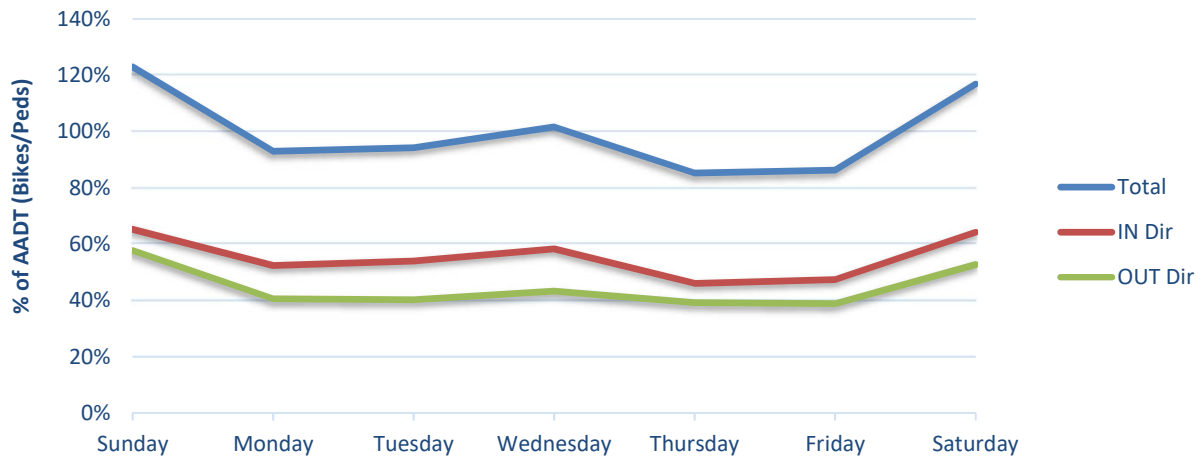
Common Errors / Notes: Data quality poor. A high number of days had to be removed due to IR sensor malf

Traffic Patterns

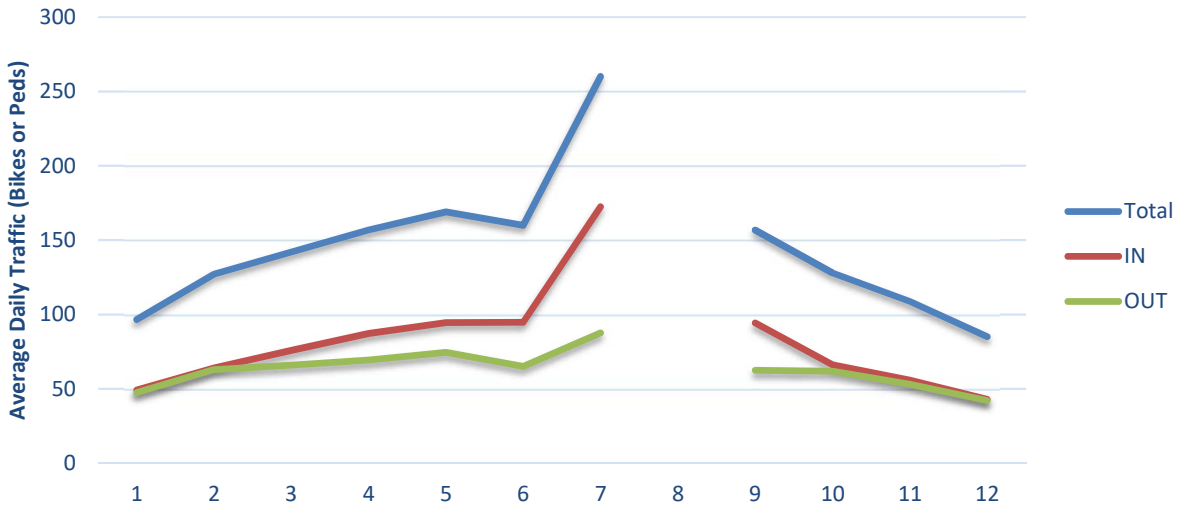
Hour of Day



Day of Week



Month of Year





Non-Motorized Monitoring
2017 Counter Summary
5/30/2018

Count Site Information

Operating Agency: CDOT
Location: 8th St - West of N Erie Ave
Count Mode: Pedestrian
Count Site ID: P90010
Lat/Long: 38.27448 / -104.60178
Facility Type: On Sidewalk
IN Direction: Westbound
OUT Direction: Eastbound

Travel Volume Statistics

Total Volume: 39,253
AADT: 109
Weekday/Weekend Index (WD/WE): 1.26
AM-PM/Mid-Day Index (AMPM/Mid-Day): 0.53
Directional Split (IN / OUT): 55% 45%
Peak Day: 195

DOW Averages:

Annual Average Day of the Week (AADW)			
Day of Week	Total	IN	OUT
Sunday	94	50	44
Monday	122	67	55
Tuesday	121	65	56
Wednesday	119	64	54
Thursday	107	59	48
Friday	110	59	51
Saturday	90	51	39

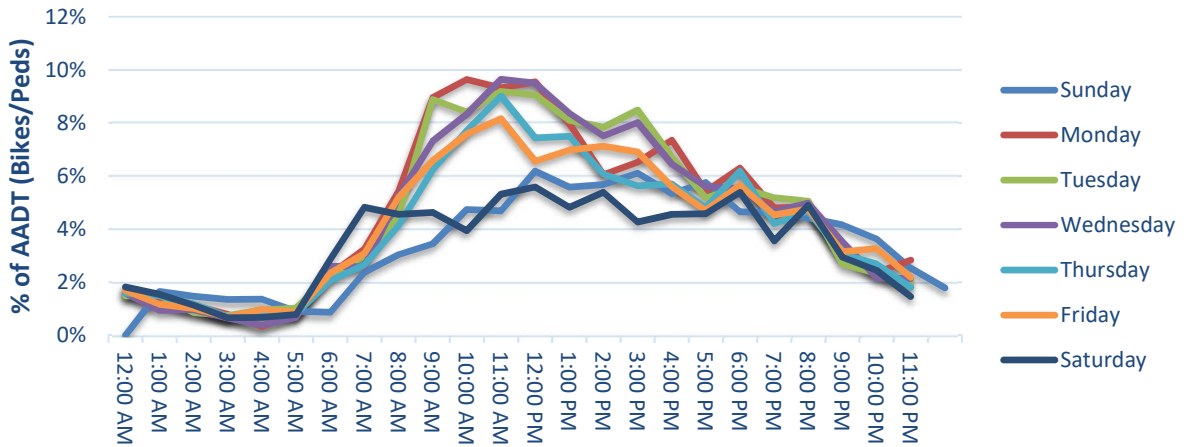
Data Quality

Days of Data: 266
Percent Complete (Year): 73%

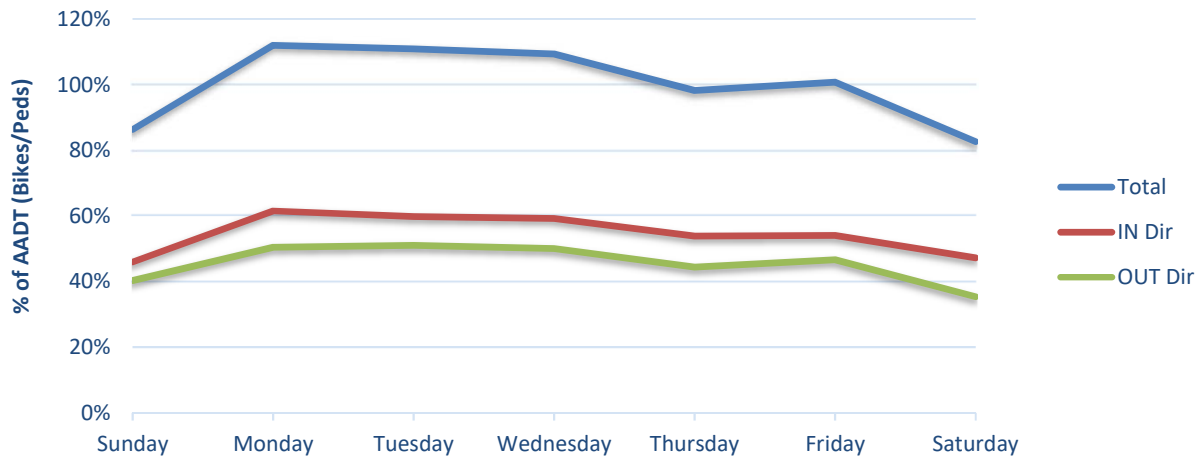
Common Errors / Notes: Counts need to be validated. Counts appear high.

Traffic Patterns

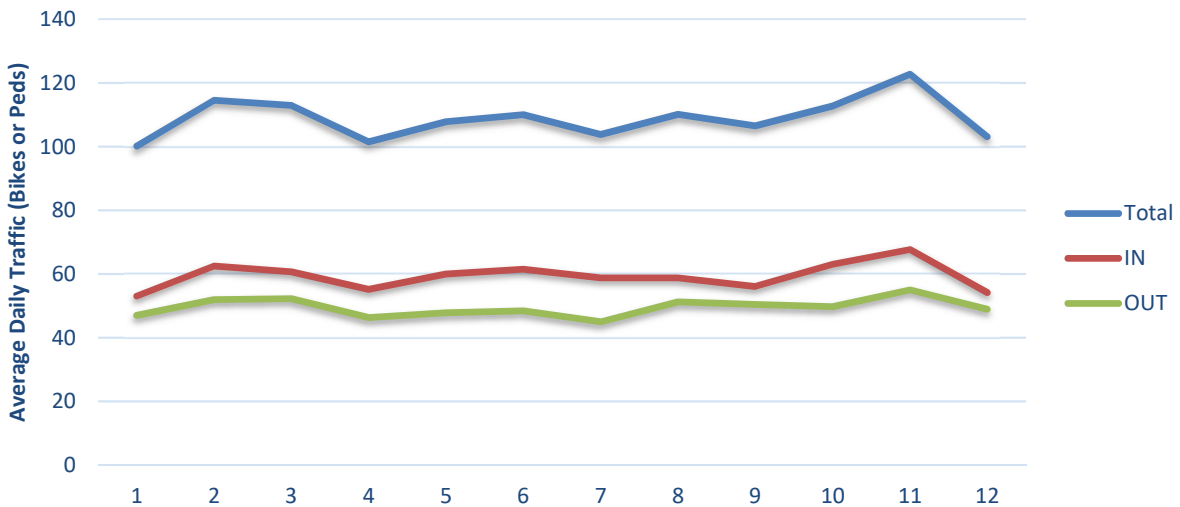
Hour of Day



Day of Week



Month of Year





Non-Motorized Monitoring
2017 Counter Summary
5/30/2018

Count Site Information

Operating Agency: CDOT
Location: 8th St - West of N Erie Ave
Count Mode: Pedestrian
Count Site ID: P90011
Lat/Long: 38.27432 / -104.60265
Facility Type: On Sidewalk
IN Direction: Westbound
OUT Direction: Eastbound

Travel Volume Statistics

Total Volume: 30,518
AADT: 85
Weekday/Weekend Index (WD/WE): 1.34
AM-PM/Mid-Day Index (AMPM/Mid-Day): 0.52
Directional Split (IN / OUT): 49% 51%
Peak Day: 186

DOW Averages:

Annual Average Day of the Week (AADW)			
Day of Week	Total	IN	OUT
Sunday	67	34	33
Monday	94	45	49
Tuesday	96	46	49
Wednesday	95	47	48
Thursday	90	44	45
Friday	86	42	45
Saturday	70	34	36

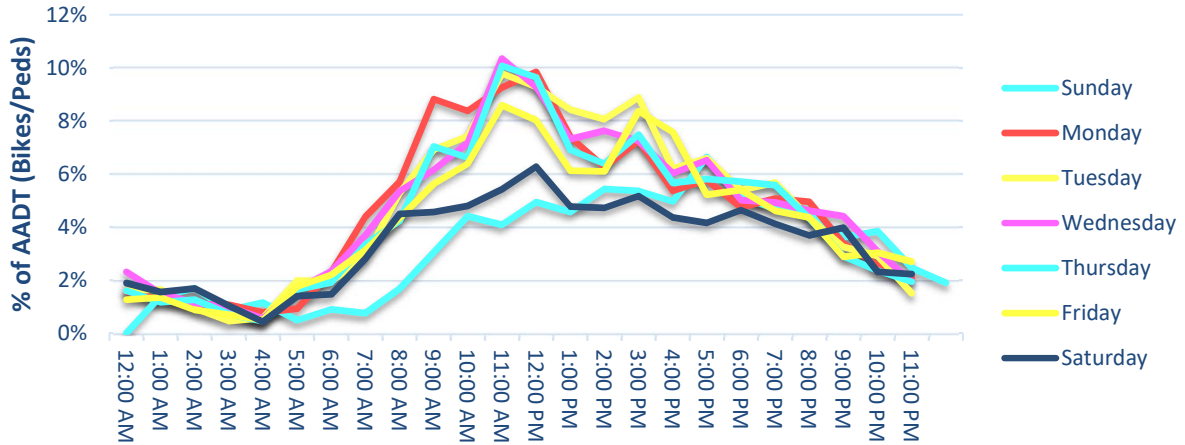
Data Quality

Days of Data: 266
Percent Complete (Year): 73%

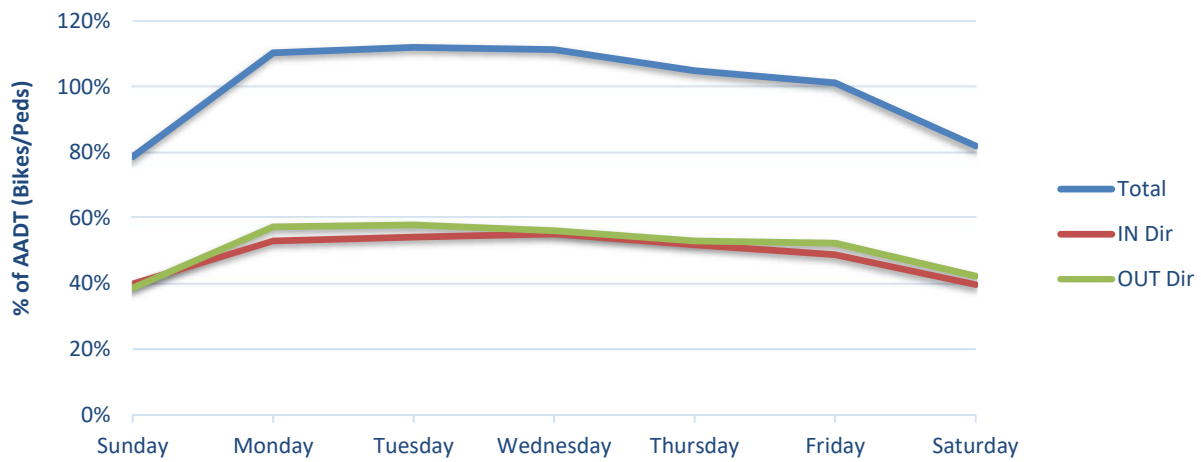
Common Errors / Notes: Count site needs to be validated. Counts may be high.

Traffic Patterns

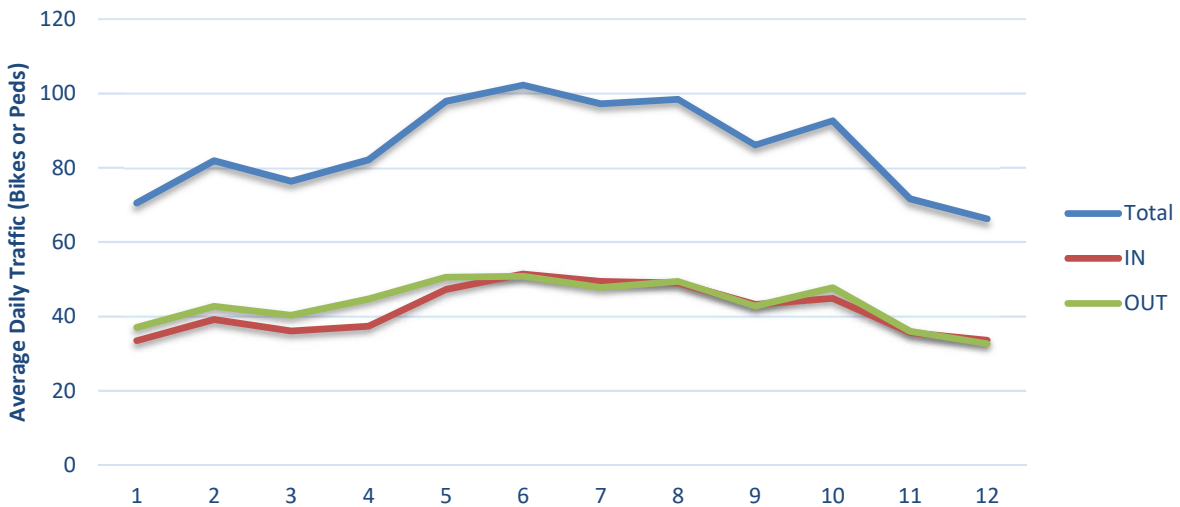
Hour of Day



Day of Week



Month of Year





Non-Motorized Monitoring
2017 Counter Summary
5/31/2018

Count Site Information

Operating Agency: CDOT
Location: Multi-Use Trail @ Copper Mountain
Count Mode: Pedestrian
Count Site ID: P90015
Lat/Long: 39.50018, -106.16472
Facility Type: Multi-Use Trail
IN Direction: Eastbound
OUT Direction: Westbound

Travel Volume Statistics

Total Volume: 25,214
AADT: 90
Weekday/Weekend Index (WD/WE): 0.71
AM-PM/Mid-Day Index (AMPM/Mid-Day): 0.34
Directional Split (IN / OUT): 55% 45%
Peak Day: 2468

DOW Averages:

Annual Average Day of the Week (AADW)			
Day of Week	Total	IN	OUT
Sunday	135	76	60
Monday	61	32	28
Tuesday	64	36	28
Wednesday	128	73	55
Thursday	80	45	35
Friday	68	34	34
Saturday	90	49	41

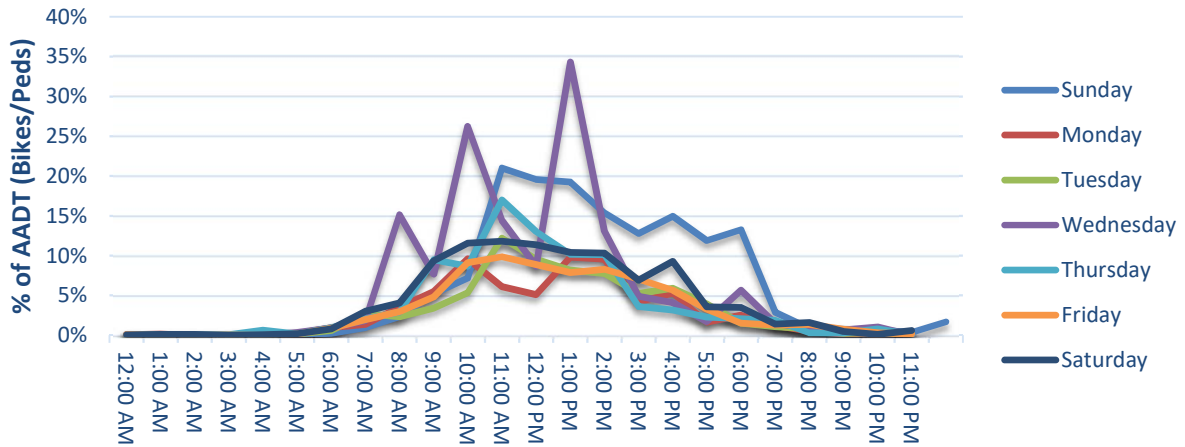
Data Quality

Days of Data: 266
Percent Complete (Year): 73%

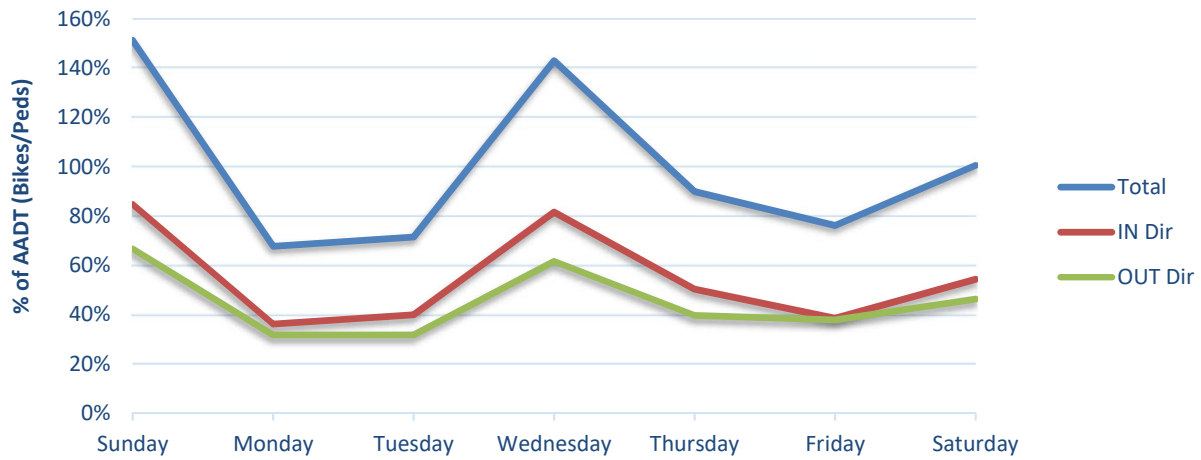
Common Errors / Notes: Data quality poor due to gaps. Counter exhibiting odd patterns.

Traffic Patterns

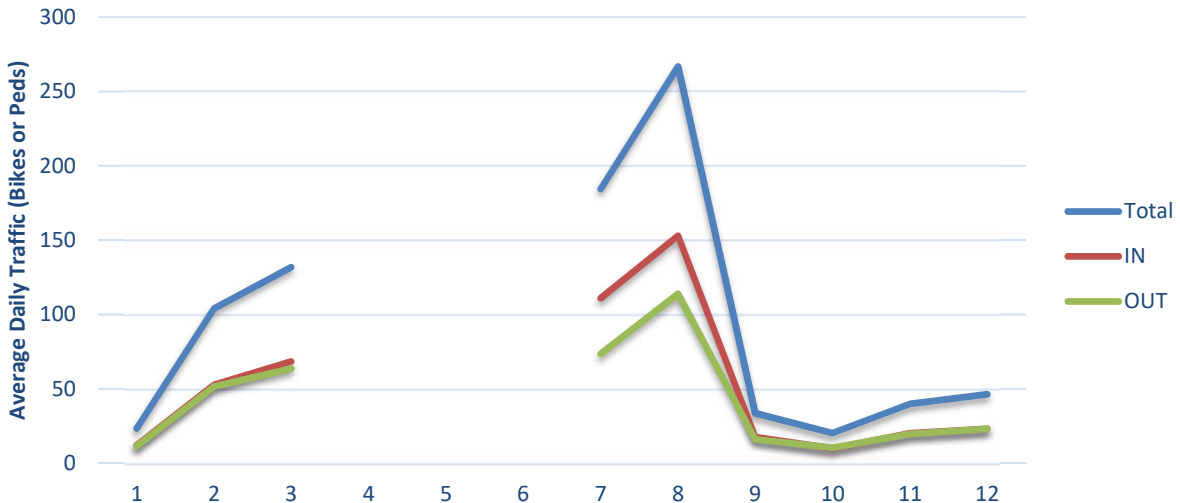
Hour of Day



Day of Week



Month of Year





Non-Motorized Monitoring
2017 Counter Summary
5/31/2018

Count Site Information

Operating Agency: CDOT
Location: Sidepath along Broadway - Between West Ave & River
Count Mode: Pedestrian
Count Site ID: P90018
Lat/Long: 39.06811 / -108.57970
Facility Type: Sidepath
IN Direction: Eastbound
OUT Direction: Westbound

Travel Volume Statistics

Total Volume: 4,955
AADT: 24
Weekday/Weekend Index (WD/WE): 1.17
AM-PM/Mid-Day Index (AMPM/Mid-Day): 0.48
Directional Split (IN / OUT): 47% 53%
Peak Day: 60

DOW Averages:

Annual Average Day of the Week (AADW)			
Day of Week	Total	IN	OUT
Sunday	22	11	11
Monday	25	12	13
Tuesday	28	13	16
Wednesday	23	11	11
Thursday	26	12	14
Friday	23	11	12
Saturday	21	9	11

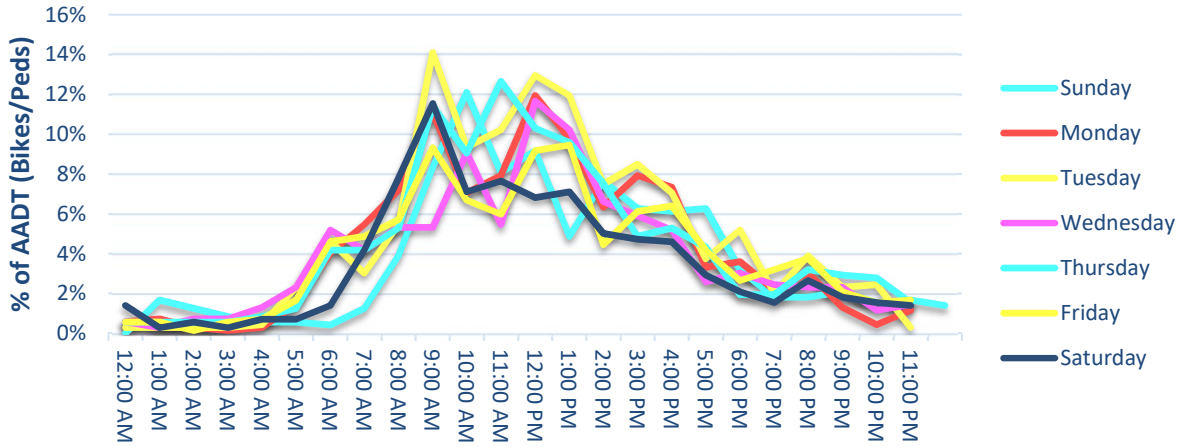
Data Quality

Days of Data: 207
Percent Complete (Year): 57%

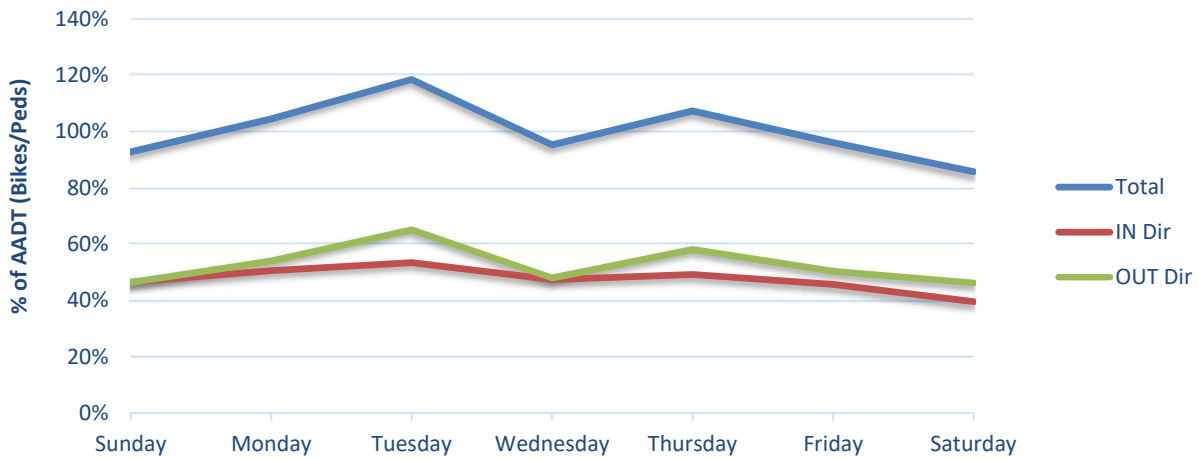
Common Errors / Notes:

Traffic Patterns

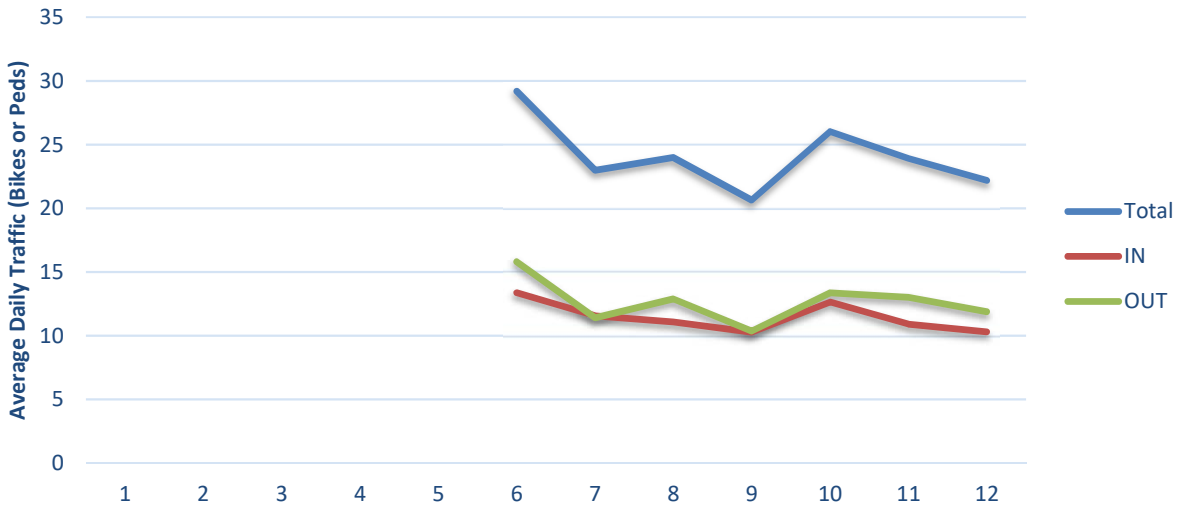
Hour of Day



Day of Week



Month of Year





Non-Motorized Monitoring
2017 Counter Summary
5/31/2018

Count Site Information

Operating Agency: CDOT
Location: Mason Trail - Fort Collins
Count Mode: Bicycle
Count Site ID: B90020
Lat/Long: 40.56298 / -105.07987
Facility Type: Multi-use Path
IN Direction: Northbound
OUT Direction: Southbound

Travel Volume Statistics

Total Volume: 92,295
AADT: 264
Weekday/Weekend Index (WD/WE): 0.99
AM-PM/Mid-Day Index (AMPM/Mid-Day): 0.77
Directional Split (IN / OUT): 50% 50%
Peak Day: 524

DOW Averages:

Annual Average Day of the Week (AADW)			
Day of Week	Total	IN	OUT
Sunday	265	135	130
Monday	260	132	128
Tuesday	269	135	134
Wednesday	272	133	139
Thursday	273	134	140
Friday	241	123	118
Saturday	265	135	130

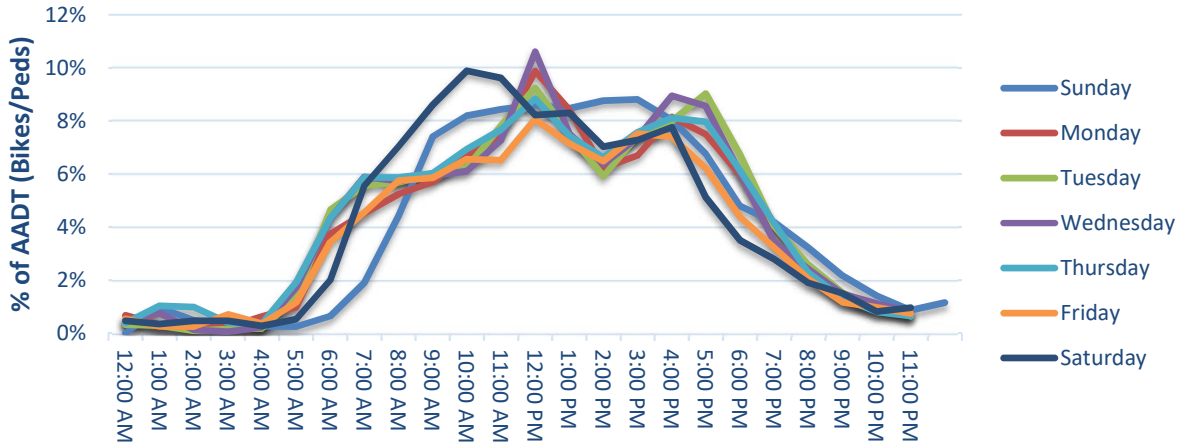
Data Quality

Days of Data: 266
Percent Complete (Year): 73%

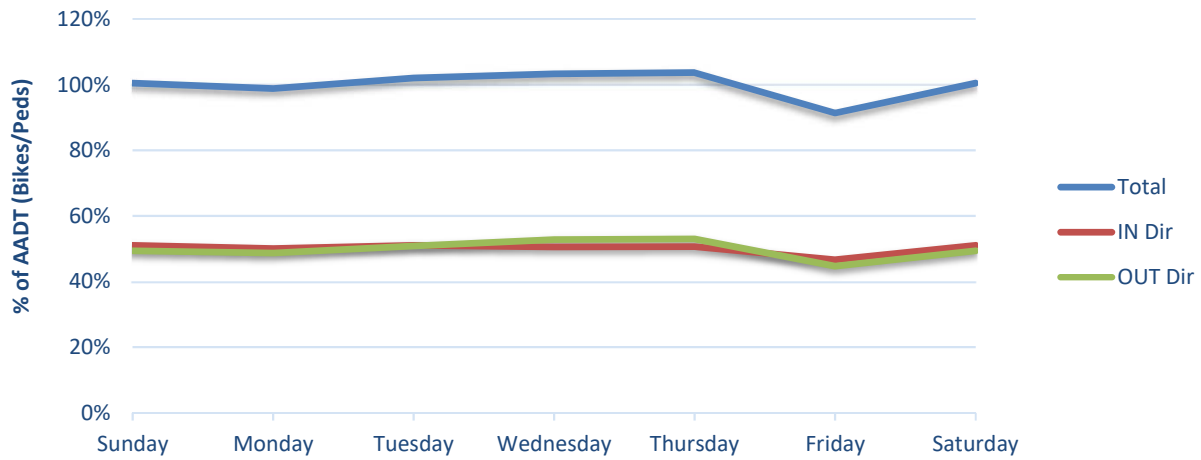
Common Errors / Notes:

Traffic Patterns

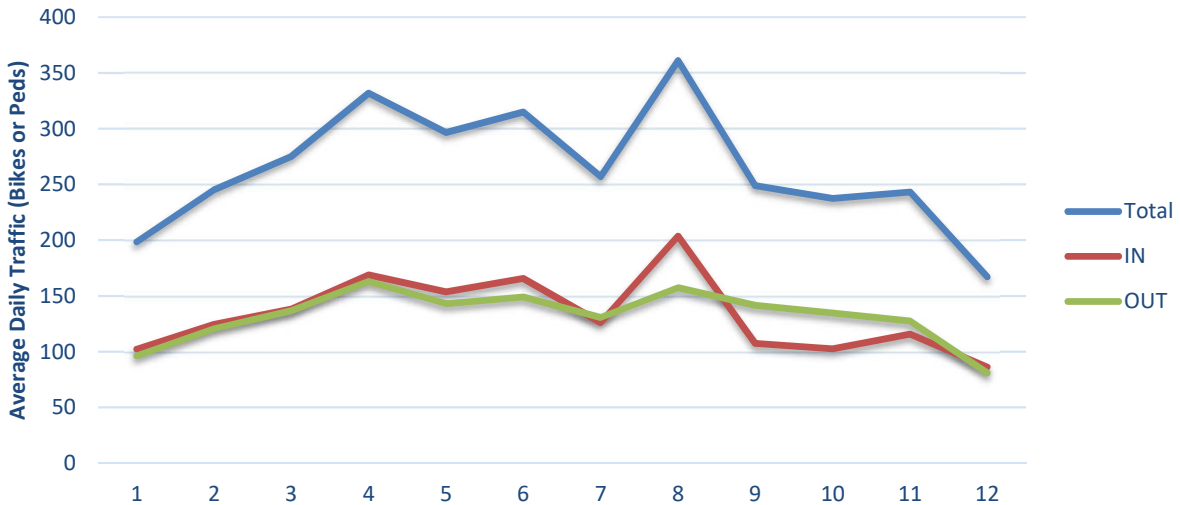
Hour of Day



Day of Week



Month of Year





Non-Motorized Monitoring
2017 Counter Summary
5/31/2018

Count Site Information

Operating Agency: CDOT
Location: US 36 Bikeway - Westminster
Count Mode: Pedestrian
Count Site ID: P90023
Lat/Long: 39.86781 / -105.05895
Facility Type: Multi-Use Trail
IN Direction: Northbound
OUT Direction: Southbound

Travel Volume Statistics

Total Volume: 7,441
AADT: 21
Weekday/Weekend Index (WD/WE): 0.83
AM-PM/Mid-Day Index (AMPM/Mid-Day): 1.34
Directional Split (IN / OUT): 55% 45%
Peak Day: 61

DOW Averages:

Annual Average Day of the Week (AADW)			
Day of Week	Total	IN	OUT
Sunday	26	15	11
Monday	19	10	9
Tuesday	21	11	9
Wednesday	22	12	10
Thursday	20	11	9
Friday	18	10	8
Saturday	22	12	10

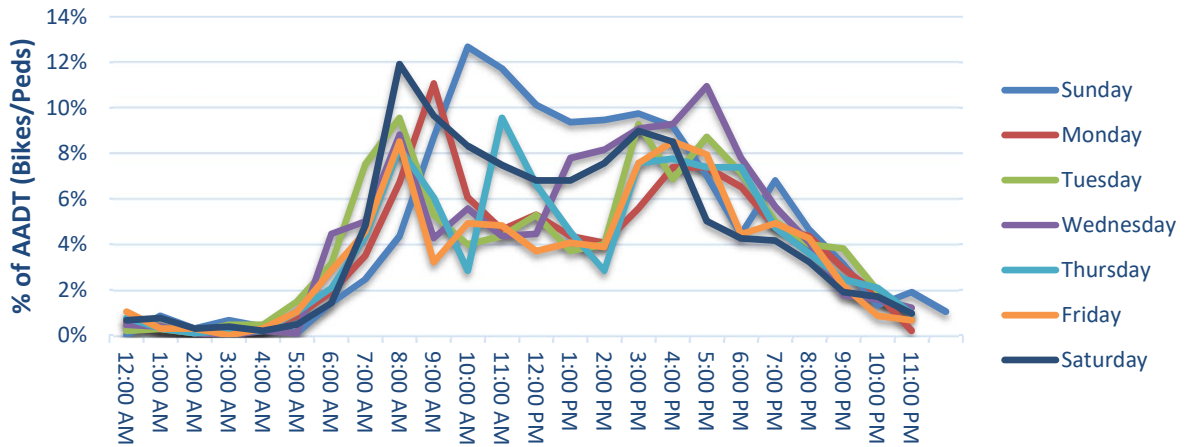
Data Quality

Days of Data: 352
Percent Complete (Year): 96%

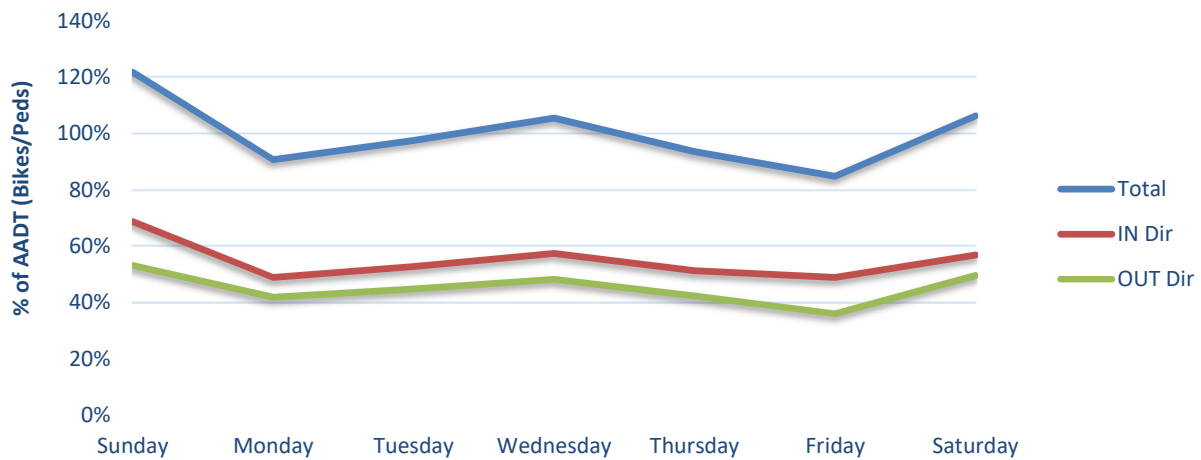
Common Errors / Notes:

Traffic Patterns

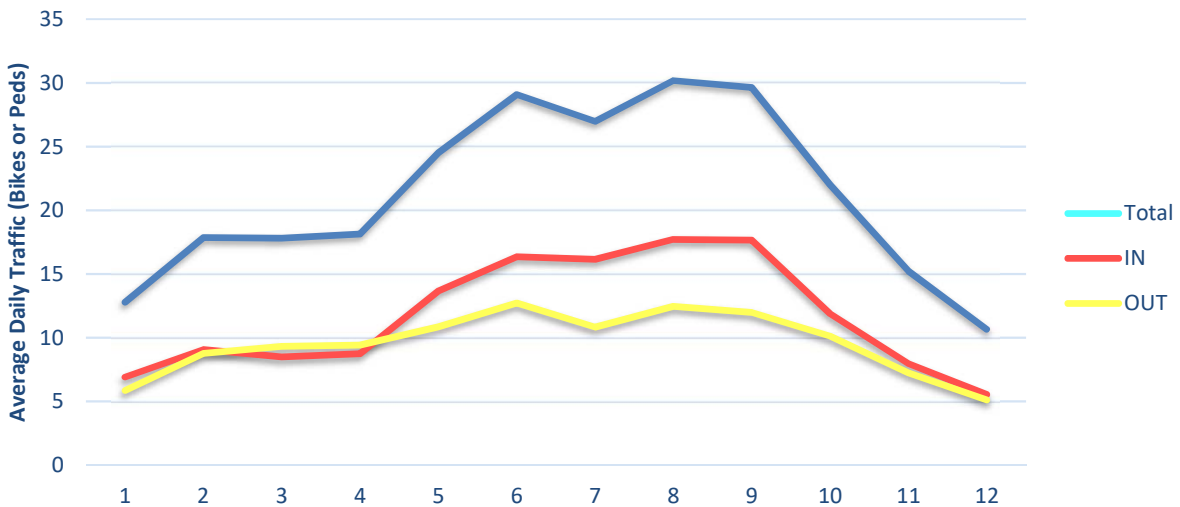
Hour of Day



Day of Week



Month of Year





Non-Motorized Monitoring
2017 Counter Summary
5/31/2018

Count Site Information

Operating Agency: CDOT
Location: US 36 Bikeway - Uptown Ave
Count Mode: Pedestrian
Count Site ID: P90024
Lat/Long: 39.903075, -105.083047
Facility Type: Shared Use Path
IN Direction: NB
OUT Direction: SB

Travel Volume Statistics

Total Volume: 13,501
AADT: 37
Weekday/Weekend Index (WD/WE): 0.85
AM-PM/Mid-Day Index (AMPM/Mid-Day): 1.29
Directional Split (IN / OUT): 56% 44%
Peak Day: 105

DOW Averages:

Annual Average Day of the Week (AADW)			
Day of Week	Total	IN	OUT
Sunday	41	23	18
Monday	34	18	16
Tuesday	35	19	16
Wednesday	43	23	20
Thursday	34	19	15
Friday	32	18	14
Saturday	43	25	18

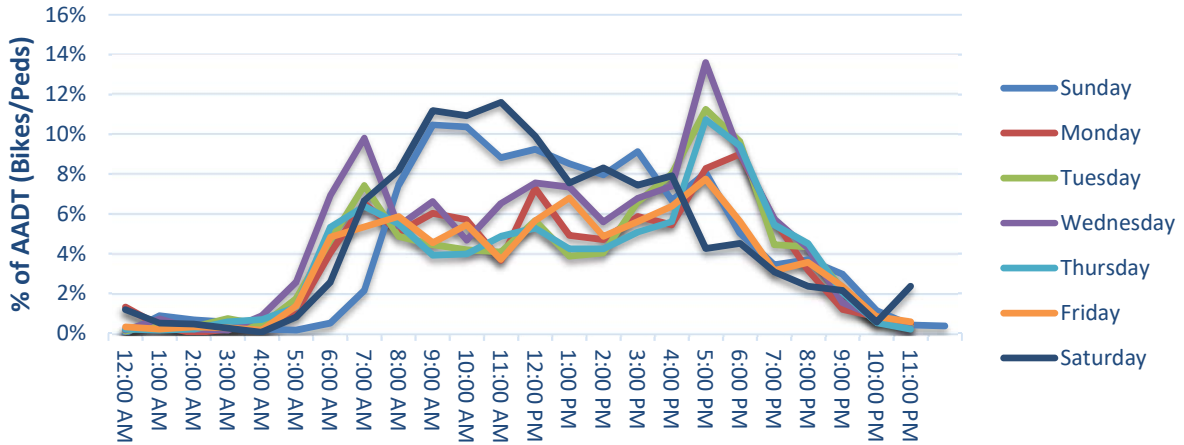
Data Quality

Days of Data: 360
Percent Complete (Year): 99%

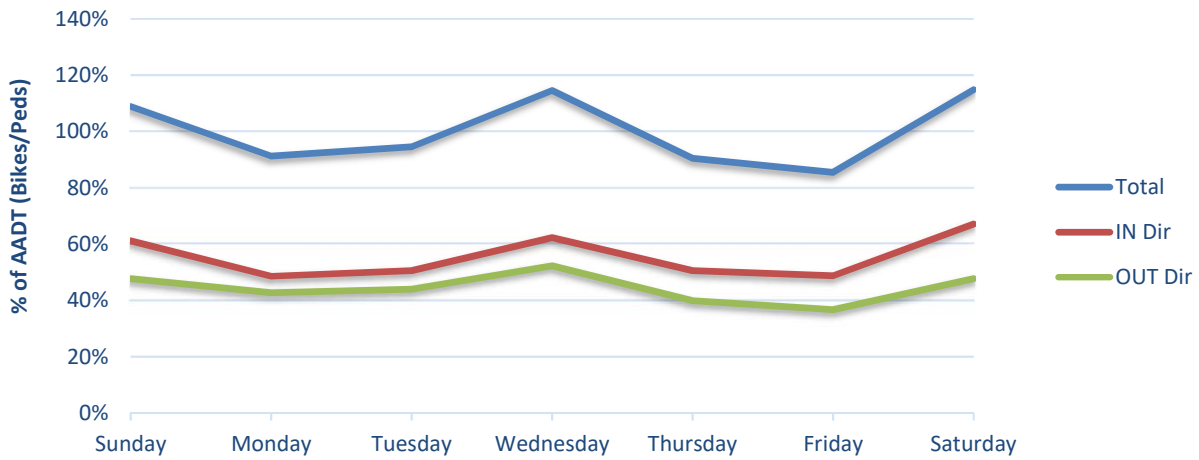
Common Errors / Notes:

Traffic Patterns

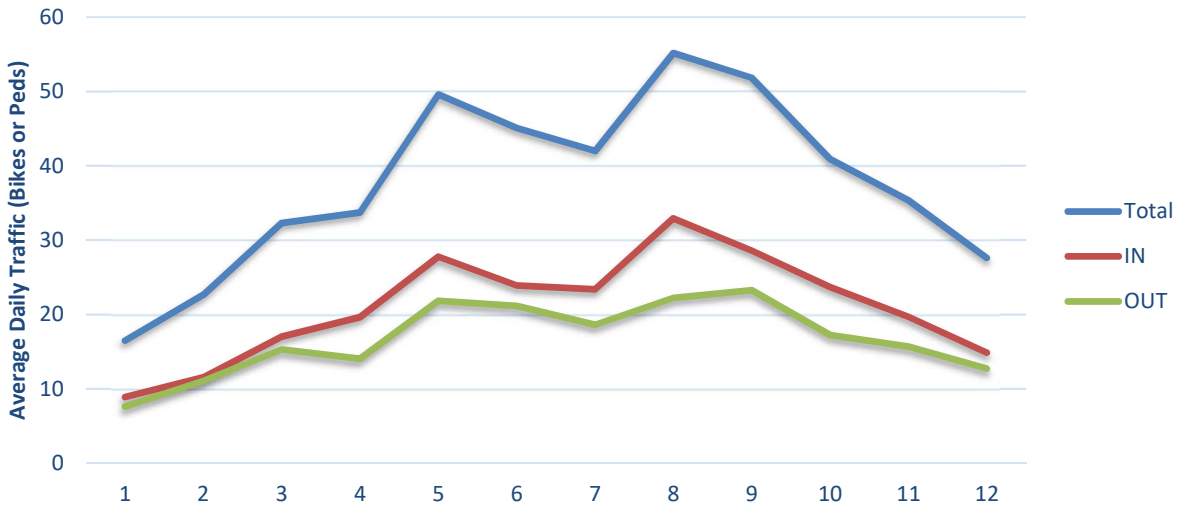
Hour of Day



Day of Week



Month of Year





Non-Motorized Monitoring
2017 Counter Summary
5/31/2018

Count Site Information

Operating Agency: CDOT
Location: US 36 Bikeway parallel to on ramp from Foothills Pkwy
Count Mode: Bicycle
Count Site ID: B90029
Lat/Long: 39.983483 / -105.229389
Facility Type: Multi-Use Path
IN Direction: WB
OUT Direction: EB

Travel Volume Statistics

Total Volume: 10,664
AADT: 29
Weekday/Weekend Index (WD/WE): 0.70
AM-PM/Mid-Day Index (AMPM/Mid-Day): 1.19
Directional Split (IN / OUT): 51% 49%
Peak Day: 74

DOW Averages:

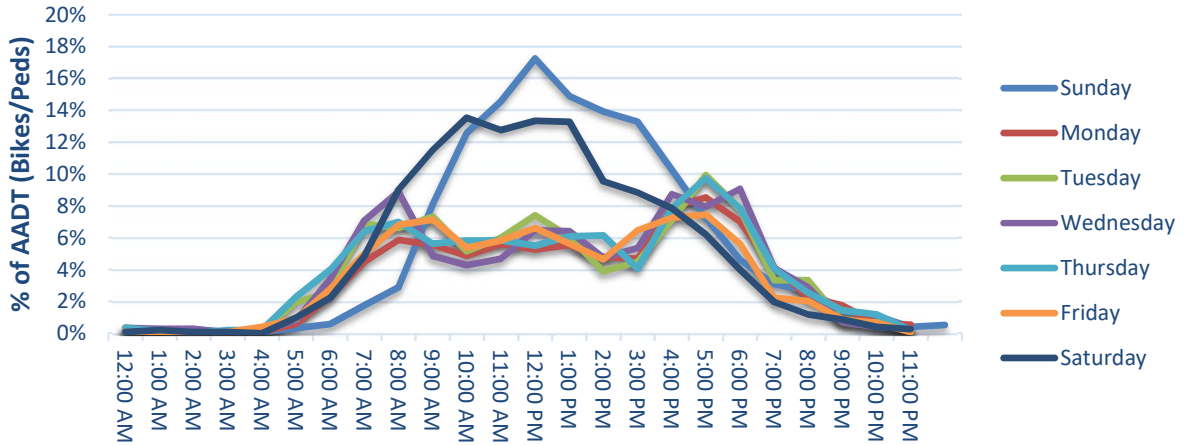
Annual Average Day of the Week (AADW)			
Day of Week	Total	IN	OUT
Sunday	39	19	20
Monday	24	13	12
Tuesday	27	14	13
Wednesday	27	14	13
Thursday	28	15	13
Friday	25	13	12
Saturday	36	19	18

Data Quality

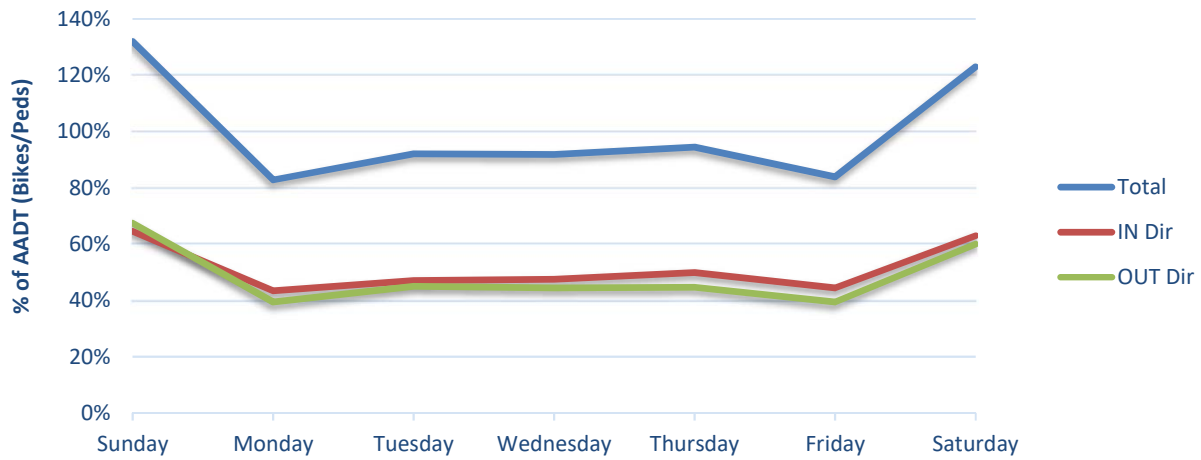
Days of Data: 362
Percent Complete (Year): 99%
Common Errors / Notes:

Traffic Patterns

Hour of Day



Day of Week



Month of Year

